

CAAHESM NEWS

NEWS

NEWS

NEWS

Consortium for the Advancement of Adult Higher Education

Volume 13, Number 3
December 2003

<http://www.caahe.org>

Table of Contents

[From the Chair](#)..... 2

Meetings and Conferences

- [IPD New Deans' Meeting](#)..... 3
- [CAAHE Institutional Representatives' Meeting](#)..... 3
- [Financial Aid Conference](#) 3
- [Student Services Conference](#)..... 3
- [2004 CAAHE Conference: 'Systems Thinking, Making the Connections'](#)..... 3

CAAHE News

- [CAAHE I/R Annual Meeting](#) 4
- [Dr. Mark Smith Appointed to National Education Board](#)..... 4
- [FlexSolution MBA Blends On-Ground, Online Delivery](#) 5
- [Adult and Continuing Education Celebrates 10 Years](#) 5
- [Tulsa Campus Starts Second Cohort](#)..... 6
- [Indiana Wesleyan Adult Program Boasts Great Year](#)..... 7
- [New Opportunities for ACE in Metro Detroit](#) 8
- [MOL Program Off to Great Start](#)..... 9
- [IPD Congratulates Inaugural President's Circle](#)..... 10

Academic Services

- [Learning Communities, Copyright Top Conference Items](#) 11
- [First Doctorate Nearing Approval for Indiana Wesleyan](#)..... 12
- [Profile for Instructional Excellence Assists Part-Time Faculty](#) 12

Financial Aid

[Shortening Loan Periods](#) 13

Welcome

[ACE Welcomes New Dean](#) 14

[Enrollment Update](#) 15

[Article Submissions](#)..... 16

(Please note that you can click on the above Table of Contents items to get to any article quickly.)

From the Chair

By Jenifer Bavifard
Medaille College

Going with the Flow of Constant Change

As professional educators in an ever-changing environment, it is necessary for us to remain adaptable, creative, and strong leaders for our staff, students, and colleagues. Our accelerated adult programs are often the “corporate” side within our more traditional colleges and universities, and by virtue of the nature of our accelerated programming, we are most often in a constant state of flux. Only by staying focused on our core goals can we stay afloat in the flow of constant change.

Our primary responsibility is to provide quality academic programming to maintain the integrity of our curriculum and to stay true to our institutional mission and goals. Yet all of this must be done within a competitive academic environment that is rife with change. To ensure the latest



information is incorporated into our modules, course content regularly is reviewed and revised. Instructors with both classroom and “real-world” expertise are critical to our programs, yet they, too, are vulnerable to changes in their professional careers. Amid all this turmoil, we also must prepare students who can read, write, comprehend, and think critically—one thing that doesn’t change!

We must also provide efficient, quality student services, including academic advising, proactive study group interventions, financial aid counseling, accounting services, and textbook and computer technology services, as well as support for the adjunct faculty members who are a major source of our instruction. Each of these areas of constant change can be managed only by recognizing those goals and principles that remain unchanged—a commitment to quality education and superb student services.

During the past year, the accelerated adult programs at Medaille hosted three accreditation visits, one of which was the 10-year institutional visit by Middle States, our regional accrediting agency. As a result, our institution has embarked upon a college-wide strategic planning process this year, including a review of our mission. Thus, in addition to the constant flux of our accelerated adult programs, the entire College is involved in the change process. There are exciting opportunities for us to embrace while we handle the day-to-day challenges. I imagine most of us in CAAHE go through the evaluation/assessment process on a regular basis and can understand the joys and challenges of the process. It is a healthy endeavor that keeps us on our toes and directs us back to our primary goal: educating our students.

It is change, continuing change, inevitable change, that is the dominant factor in society today. No sensible decision can be made any longer without taking into account not only the world as it is, but the world as it will be.
–Isaac Asimov

As leaders in our particular arenas, we must adapt to our dynamic environments and work with our teams to develop creative ways to handle our challenges. We must also encourage and motivate our staff members toward excellence in performance and delivery of services. Our collective focus on handling change in a positive manner will impact those we serve. To quote Isaac Asimov: “It is change, continuing change, inevitable change, that is the dominant factor in society today. No sensible decision can be made any longer without taking into account not only the world as it is, but the world as it will be.”

[Return to Contents Page](#)

Meetings and Conferences

IPD New Deans' Meeting

As in the past, IPD will host all new Deans for an IPD orientation on Thursday, January 29, 2004, the day prior to the CAAHE I/R meeting. IPD provides transportation and lodging for this event. Questions may be directed to Sue Salter, AVP and Executive Director of CAAHE, at (480) 557-1153.

CAAHE Institutional Representatives' Meeting

The 2004 Annual CAAHE Institutional Representatives' Meeting will be held Friday, January 30, through Saturday, January 31, at the Scottsdale Marriott Suites Old Town, 7325 E. Third St., Scottsdale, AZ 85251. The phone number is (480) 945-1550. The room rate is \$169 plus taxes per night. The meeting will be from 8 a.m. to 5 p.m. on Friday and then 8 a.m. to noon on Saturday.

Financial Aid Conference

Mark your calendars. The 2004 IPD Financial Aid Conference will be hosted by Hope International University in sunny Southern California on March 8–9, 2004. The Financial Aid Conference will start with a welcome dinner on Sunday, March 7, following with a full day and evening activity on Monday, March 8. The conference is scheduled to wrap up on Tuesday, March 9. The theme for this year's conference will center on the electronic age. This is a valuable opportunity to soak in some regulatory knowledge and network with your peers...not to mention soak in the glorious California sunshine.



Student Services Conference

The CAAHE/IPD Student Services Conference will be held April 15–16, 2004, in Memphis, TN. The agenda is being developed—look for correspondence from Deanna Boe, IPD Director of Student Services and the conference organizer. Also, watch for details in the next issue of the *Student Services News*, due out in February.

2004 CAAHE Conference: 'Systems Thinking, Making the Connections'

The 2004 CAAHE Conference is being hosted by Medaille College in Buffalo, NY. The conference will be June 9–11 at the Hyatt Regency Buffalo, Two Fountain Plaza, Buffalo, NY 14202. The phone number is (716) 856-1234. The room rate is \$119 plus taxes per night.

[Return to Contents Page](#)

CAAHE I/R Annual Meeting

It's time again for the CAAHE I/R annual meeting. This year it will be held on Friday, January 30, through Saturday, January 31. The Executive Board is working on the agenda. The meeting will be held both days at the

Scottsdale Marriott Suites Old Town
7325 East Third Avenue
Scottsdale, AZ 85251

Phone: (480) 945-1550

Room rates have been guaranteed at \$169 per night plus taxes. When you make your reservation, make sure you state that you are with the CAAHE group to ensure you get the correct room rate. **Reservations must be made by January 9, 2004, to receive the CAAHE rate.**



Please note that your institution, not CAAHE, is responsible for your travel, hotel, car rental, etc. On Friday, January 30, the meeting runs from 8 a.m. to 4 p.m., continuing with a group dinner at 6 p.m. The meeting runs from 8 a.m. to noon on Saturday, January 31.

If you are a new Dean, you are invited to join IPD for a New Deans' Orientation on Thursday, January 29, 2004. For this, IPD supports travel and one night of lodging—look for details from Sue Salter's office or contact Sue at (480) 557-1153.

Once the Executive Board finalizes the agenda, a copy will be e-mailed to all of you. See you in January!

Dr. Mark Smith Appointed to National Education Board

Dr. Mark A. Smith, Vice President of Adult and Graduate Colleges at Indiana Wesleyan University, received a letter on November 12, 2003, stating that he had been nominated by Secretary of Education Rod Paige to serve a three-year appointment on the 15-member National Board of the Fund for the Improvement of Post Secondary Education (FIPSE).

The board advises the Secretary of Education and the Congress on the priorities for the improvement of postsecondary education. The board advises the Secretary and the Director of FIPSE with regard to improvement in postsecondary education, planning documents and guidelines, and procedures for grant competitions. Each year millions of dollars in federal grant dollars are awarded to universities to improve education.

[Return to Contents Page](#)

FlexSolution MBA Blends On-Ground, Online Delivery

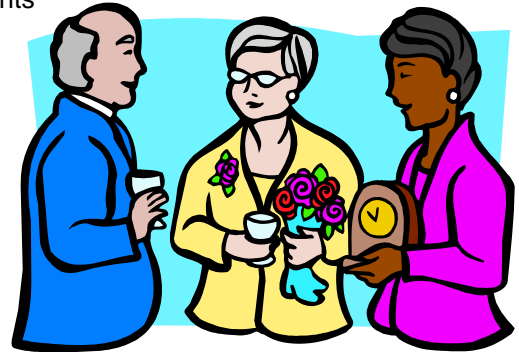
In November, Baker University School of Professional and Graduate Studies started an MBA program with a new combined on-ground/online model that blends face-to-face contact and a virtual classroom environment providing a dynamic, flexible program. The distance model uses the same 41-credit MBA SPGS curriculum. Classes meet Friday nights and Saturday mornings on-ground approximately every eight weeks. Between these classroom meetings, students and learning teams interact asynchronously with faculty and peers online via the Blackboard platform, e-mail, and threaded discussion groups. This program was developed as a flexible solution for students within a two- to three-hour radius of the SPGS campus locations and those balancing work travel requirements while pursuing educational objectives. The first group began November 21, 2003.



Adult and Continuing Education Celebrates 10 Years

On November 8, 2003, the Cornerstone University Adult and Continuing Education (ACE) program celebrated 10 years by holding an anniversary banquet for faculty, staff, and alumni. Alumni were invited back to attend the special dinner and program, to reacquaint themselves with old friends, and to learn about future plans for this successful program. The evening featured a delicious dinner, live music, and testimonials from faculty and ACE graduates on what God is doing in their lives.

The Cornerstone University Alumni Association Outstanding Achievement Award was presented to Chester and Donna Harris for their outstanding achievements in Christian ministry. Donna is employed at Spectrum Health in Grand Rapids, MI, as an ultrasound technician. Chester recently retired after working 30 years for Spartan stores. This couple launched Discovery Ministries, which helps individuals discover how God has equipped them to serve the body of Christ. They have traveled to Brazil, Argentina, and Jamaica for ministry and to other churches in the United States to lead their Discovery seminars. In June 2003, the couple joined a ministry team from their church to lead a family camp for a church in Kiev, Ukraine. The Harrises have been involved at their church in teaching, choir, special music, drama, and counseling.



Kenneth Vanderberg, a full-time faculty member with ACE, was awarded the Outstanding ACE Educator Award. Ken has taught in the ACE program for 10 years. His great stamina, his excellence in teaching, his steady demeanor and even temper, his inspiration of and respect for his students, his devotion to Christ, and his love for Cornerstone University and its mission all add up to make this man the example for all ACE faculty to emulate.

Dr. Robert Simpson, Dean of Adult and Continuing Education and Graduate Programs, honored Colleen Smith, Director of Academic Services, and Keith DeBoer, Director of Student Services and Weekend College, for their faithful service and contributions to the ACE program since its inception 10 years ago.

The ACE program now graduates more students than the traditional undergraduate program. While the ACE program began 10 years ago at the main campus in Grand Rapids, there are now many classroom sites across the state.

[Return to Contents Page](#)

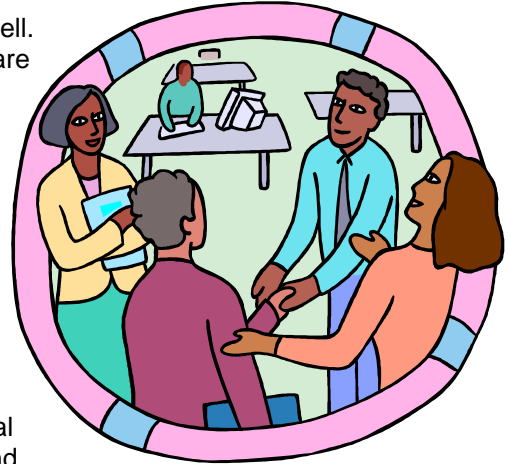
Tulsa Campus Starts Second Cohort

St. Gregory's University and the College for Working Adults welcomed 18 students to the Tulsa campus on Tuesday, October 28, 2003. This marks the second cohort to start since the Grand Opening on September 15, 2003.

Things are moving along quite well in Tulsa, and St. Gregory's anticipates getting a third cohort group started before the end of 2003.

The staff members from St. Gregory's and IPD have blended well. The staffs are creating a cohesive customer service team and are working together to develop a program that all can all point to with pride.

Happiness Mapira, Director of Student Services, and Calvin Butler, Coordinator of Financial Aid, have both traveled to Phoenix for training along with Kelley Fitter, Director of Accounting, and Kristen Vedder, IPD Director of Student Financial Services. Several IPD staff members, including Dr. John Lopez, IPD Director of Institutional Research and Effectiveness, and Rebecca Henriksen, IPD National Vice President of Enrollment, have visited the Tulsa campus. Both have been most helpful in assisting St. Gregory's staff in several key areas. Dr. Deborah Hamilton, IPD Director of Academic and Institutional Services, and Dana Souser, IPD Curriculum Project Manager, also traveled to Tulsa to assist the St. Gregory's staff with its first orientation for new faculty.



Speaking of faculty, St. Gregory's conducted its second faculty orientation on November 15. St. Gregory's now has more than 30 very qualified faculty members ready to teach in the College for Working Adults.

During the next orientation, Patrick King, Director of Enrollment Management, will conduct a session on learning teams for new faculty members. Another area of emphasis during this next orientation will be explaining the facilitative model of instruction.

St. Gregory's is examining potential new programs for the Tulsa market and is beginning the necessary processes to bring graduate courses to the Tulsa campus in early 2006.

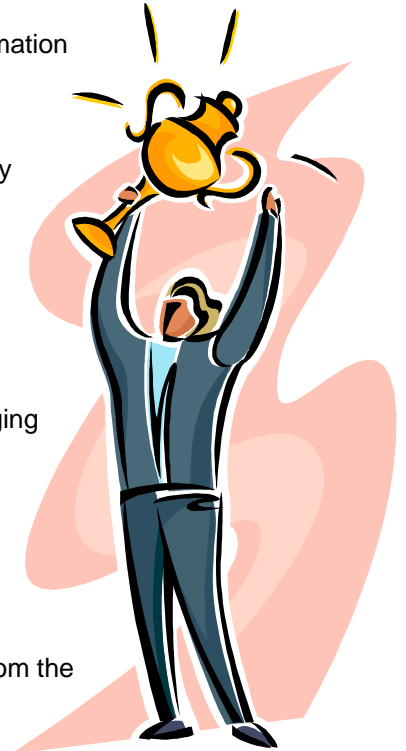
St. Gregory's is pleased with the progress made to this point and is ready to work hard to make the College for Working Adults a success.

[Return to Contents Page](#)

Indiana Wesleyan Adult Program Boasts Great Year

Indiana Wesleyan University had another wonderful year in the College of Adult and Professional Studies. Here are some highlights:

- As of October 31, 2003, the total CAPS enrollment was 6,665 students—up 785 from October 2002.
- The College is developing an Associate of Science in Computer Information Systems, and the first cohorts are projected to start in April 2004.
- The first year retention rate for all CAPS undergraduate programs combined is 94.4 percent, compared to a national retention rate of 68 percent. (The national retention rate is quoted from the Postsecondary Education Descriptive Analysis Reports published by the National Center for Education Statistics.)
- The BSN program had an all-time high enrollment number of 404 students in November.
- The College has been approved to expand the Master of Education program in Kentucky and has aggressive growth goals for the coming year.
- The College will open two new Education Centers by December, bringing the total number of Education Centers to seven in the following locations—Indianapolis North, Fort Wayne, IN; Columbus, IN; Louisville, KY; Cleveland, OH; Indianapolis West; and Kokomo, IN.
- The ASB Online program has been very well received. In its first six months, three of the four projected class starts split three ways! The fourth class start split in two. More than 100 students are enrolled in this program.
- The Master of Education program received continuing accreditation from the National Council for Accreditation of Teacher Education (NCATE) in June 2003. In October 2002, a visiting team found all NCATE standards were met on the initial and advanced levels. The team praised the Graduate Education Program as a national model and was impressed particularly with the assessment system and the high-quality faculty members.



[Return to Contents Page](#)

New Opportunities for ACE in Metro Detroit



The Adult and Continuing Education program at Cornerstone University announces two exciting opportunities to serve the metropolitan Detroit area.

First, after many months of communication and development by IPD, arrangements were made for Dr. Robert Haggerty, Associate Vice President for Academic Affairs, to meet with Dr. Chen Chang, a retired principal from the L'anse Cruise School District in Macomb County, MI. As a result, the ACE program in Troy, MI, will soon be educating Taiwanese students through this new relationship.

About seven years ago, Dr. Chang began a program of bringing students from Taiwan to the United States to complete their undergraduate or graduate degrees at U.S. institutions of higher education. Utilizing partnerships with Baker College and Lawrence Institute of Technology, Dr. Chang has sponsored Taiwanese nursing and engineering students. He began pursuing several universities, including Cornerstone. After interviewing all of them, he chose Cornerstone for the Taiwanese students he recruits. Dr. Chang expects to bring 65 to 70 Taiwanese students to the United States during the next academic year to study at Cornerstone's Troy ACE site. Classes will begin in February 2004.

Second, Cornerstone University and the United Auto Workers (UAW) have formed a relationship to provide future educational opportunities for UAW members in metro Detroit. This opportunity was created through the extensive work of Ann Von Eper, Director of Enrollment for the ACE program, and her staff. In June 2003, during a presentation by Dr. Rex M. Rogers, President of Cornerstone University, union officials chose Cornerstone over a half-dozen other higher education institutions to provide associate's and bachelor's degree programs over the next four to five years. The first cohort began September 25, 2003, at the Sterling Heights Stamping Plant in Sterling Heights, MI.

Here's what participants had to say about the partnership:

- "One of the best things that DaimlerChrysler could have done was to have Cornerstone University at our workplace." *Cynthia Bridges, student*
- "Having Cornerstone here at Sterling Stamping is a great thing. Returning to school as an adult has caused me to do some self evaluation. I have learned to prioritize more efficiently and to schedule my family around homework." *Wilda Wright, student*
- "It was a special privilege to be involved with the first cohort at Sterling Stamping. Participants quickly developed openness with each other and a warm chemistry evolved as most of the students were employed at Sterling Stamping. Students expressed great appreciation for the text, *Engaging God's World*. I found great interest, openness, and commitment to the Biblical worldview in the students' writing and in their sharing. The five weeks slipped by all too fast for the instructor." *Burton Schultz, faculty member*

The ACE program welcomes the opportunity to serve these diverse student groups.

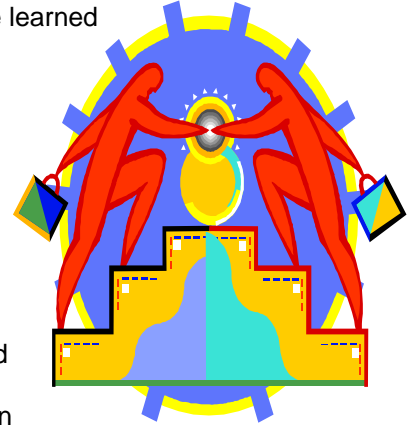
[Return to Contents Page](#)

MOL Program Off to Great Start

An effective leader in today's society requires competence in team-based, critical thinking, analytical, and communication skills. To help local executives achieve leadership competency, Medaille College launched the Masters in Organizational Leadership (MOL). The first cohort started in August 2003 at its Amherst, NY, campus.

The 17 students enrolled in this class include directors of not-for-profit and for-profit organizations and customer service managers from utility companies. In fewer than 18 months, these students will receive their master's degrees, learning the tools and techniques that make leadership effective.

According to Trish Perk, a student in this program, "The tools I have learned are valuable in both my social and corporate relationships, and are supporting me with my goal of becoming an effective and influential leader." Perk also said, "While I am navigating through the MOL program, I am continuously encountering building blocks that are promoting personal self-development and realization. I am gaining a more complete understanding of myself and the world around me."



Because the focus of the MOL is on leadership development, it includes in-depth study of human behavior. Being a practical program, students quickly learn to build cognitive, interpersonal, and strategic leadership skills. The MOL program provides structure, support, and encouragement for students to take charge of their own learning—which is essential for effective leadership

"I am learning the qualities one should possess in order to be an effective and influential leader," said Tammi Banks-Beaver, another student in the program. In the short time that Banks-Beaver has been in the program, she said, "I have a better understanding of what my role will be as a prospective leader based on many of the theories and principles we learned in the MOL curriculum. As the program progresses I look forward to the challenges ahead that will motivate me and sculpt my character into the leader that I aspire to be."

With more and more companies and not-for-profit organizations needing effective leaders, Medaille is well-positioned to provide this valuable leadership development program.

[Return to Contents Page](#)

IPD Congratulates Inaugural President's Circle

IPD is pleased to share the inaugural membership list of the President's Circle. The goal of the President's Circle is to identify top performers throughout the company and not only recognize their accomplishments but also use their knowledge and abilities to develop core competencies that can be transferred throughout the organization. Membership benefits consist of the following:

- Receiving company-wide recognition through a certificate of membership and special business card logo distinction
- Receiving an invitation to the annual meeting and quarterly teleconferences with the President that will include extensive dialogue, focusing on identifying ways to improve employee morale, working conditions, and fiscal results

Responsibilities of members will include mentoring peers across regional boundaries, participating in special task forces as needed, and sharing best practices for the benefit of all.

Congratulations to the following individuals who were included in the inaugural President's Circle in Phoenix, AZ, on October 23, 2003:

Alicia Bartlett	Campus Accounting Manager	Aquinas College
Angie Campbell	Marketing Support Coordinator	Thomas More College
Bernie Bench	Senior Enrollment Counselor	Indiana Wesleyan University
Bettie Parker	Enrollment Manager	Belhaven College
Brian Moore	Enrollment Counselor	Indiana Wesleyan University
Chad Robertson	Business Development Specialist II	Indiana Wesleyan University
David MacMillan	Campus Accounting Manager	Thomas More College
David Rose	Regional Vice President	Columbus Region
Ed Kamenc	Enrollment Counselor II	Wesley College
Greg Seigel	Regional Accounting Manager	Columbus Region
Jennifer Lembrich	Enrollment Manager	Cardinal Stritch University
Joyce Franke	Corporate Finance Administrator	IPD Corporate
Julie Birchall	Enrollment Counselor	Indiana Wesleyan University
Kiersten Hagquist	Enrollment Counselor	Indiana Wesleyan University
Kim Herzer	Enrollment Counselor II	Cardinal Stritch University
Kimberly Johnson	Business Development Specialist	Cornerstone University
Kris Douglas	Contract Manager	Indiana Wesleyan University
Linda Szczerbinski	Senior Enrollment Counselor	Cardinal Stritch University
Mimi Schultz	Enrollment Counselor II	Indiana Wesleyan University
Nancy Mount	Enrollment Manager	Shorter College
Nerissa Pancake	Associate Enrollment Counselor	Ohio Dominican University
Sarah Benson	Senior Enrollment Counselor	Indiana Wesleyan University
Shirley Smith	Enrollment Manager	Indiana Wesleyan University
Susan Alexander	Campus Accounting Supervisor	Indiana Wesleyan University
Tanya Brieger	Contract Manager	Belhaven College
Terri Blake	Graduation Advisor	Baker University
Tina Barnes	Campus Accounting Coordinator	Thomas More College
Vicki Culbreth	Contract Manager	Thomas More College
Yvette Harrold	Director of Training and Development	IPD Corporate

Academic Services

Learning Communities, Copyright Top Conference Items

Twenty-two participants from 10 CAAHE member institutions attended the annual CAAHE/IPD Academic Services Conference, held October 21–22, 2003, in Scottsdale, AZ. The two-day conference spotlighted learning communities—building them, strengthening them through mentoring, preparing them effectively for change, and training faculty with the learning community in mind.

Dr. Lois Zachary, President of Leadership Development Services, LLC, kicked off the conference with “Creating a Learning Community through Mentoring.” During the three-hour session, Dr. Zachary defined mentoring as “a reciprocal learning relationship in which mentor and mentee agree to a partnership, where they will work collaboratively toward achievement of mutually defined goals that will develop a mentee’s skills, abilities, knowledge, and/or thinking.” Participants were asked to reflect upon and share about their past mentoring experiences, which Dr. Zachary then discussed in terms of the mentoring cycle of preparing, negotiating, enabling, and coming to closure.



Dr. Zachary led hands-on and group activities during her morning session, which helped the participants recognize the importance of mentoring. The interactive and fast-paced presentation kept participants involved and enthusiastic about mentoring.

Bill Weeks, Assistant Professor at Medaille College, led the other general session. His topic, “It’s Hard to Date the Beginning of a Decline,” focused on how learning communities, as organizations, can adapt to change. He stressed the necessity of the organization continually expanding its capacity to influence its future by being proactive and focusing on a vision that will remain constant in a world of increasing change and interdependency. He posed a series of questions for the participants to take back and apply to their learning communities.

Other presenters included Dr. Joshua Fischer, Regional Dean, Indiana Wesleyan University–Cleveland; Jocelyn Ervin, dMBA Project Manager, Baker University; Dr. Sally Martin Egge, Associate Professor, Cardinal Stritch University; and Maxine Nelson, Associate Director of Academic Services, Cornerstone University.



No visit to Arizona would be complete without a taste of the Old West, so after a full day at the conference, attendees loaded up the hotel vans and headed out to Rawhide, a Wild West Town in Scottsdale. Upon arriving, attendees were treated to a cowboy feast, complete with rattlesnake, barbecued ribs and chicken, and the largest baked potatoes anyone had ever seen. The meal was finished off with hot apple pie topped with cinnamon ice cream. After all that food, it was time to walk the dusty streets, stop into the shops, and pet the goats. Some even dared to ride the camel, take their chances with the mechanical bull, or brave the haunted hotel.

For the first time, IPD offered a Curriculum Writing Workshop the day before the conference began. Twelve participants from CAAHE member institutions attended the workshop, which featured presentations and discussions on instructional design, the learning object storyboard, session planning, and copyright.

[Return to Contents Page](#)

Learning Communities, Copyright Top Conference Items continued

The pressing issue of the day was copyright. Several short presentations in the afternoon highlighted the importance of citing all material used and how to incorporate the vast material available on the Internet into courses and course management systems without violating copyright laws.

Overall, those present at the conference and the writing workshop appreciated the time spent networking with their peers and sharing best practices. Many thanks for the hard work of all who organized the conference, especially Judy Powell, IPD Academic and Institutional Services Administrator.

First Doctorate Nearing Approval for Indiana Wesleyan

Indiana Wesleyan University will soon become an institution that can grant doctoral degrees. A focus visit team from the Higher Learning Commission of the North Central Association of Colleges and Schools has announced its intent to recommend full approval for the University to offer its first doctoral degree—a Doctorate in Education in Organizational Leadership. The visit team praised the conceptual framework, which is centered on the Servant Leader as World Changer. It also praised the strong administrative structure, which is well suited to take the University to a higher level.



The University is currently searching for an EdD Program Director and will likely start the degree in Summer 2004. It will be based in Indianapolis and may include online components and a weeklong summer intensive in Marion. It will be administered through the College of Graduate Studies and marketed by the University's Adult Enrollment Services.

Profile for Instructional Excellence Assists Part-Time Faculty

The School of Professional and Graduate Studies at Baker University is committed to providing innovative educational opportunities that meet the lifelong learning needs of adult students. The focus of that commitment is student learning through instructional excellence.

To respond to this need for quality assurance and increased communication among the SPGS part-time faculty, the Profile for Instructional Excellence was created to describe the responsibilities and behaviors of teachers during the instructional process. The development of the profile involved more than 200 faculty and students. It delineates those elements on a continuum that visually represent what is exemplary to what is unacceptable for the level of instruction desired at SPGS.

The Profile establishes clear expectations for new instructors, offers a common language for instruction in SPGS, serves as an anchor for knowledge management, informs students of expectations for instructors, provides meaningful coaching and assessment information for faculty, and creates the framework for faculty development. Professional development activities or workshops are based on the information gathered from the Profile for self-assessments and peer coaching observations and from the student end-of-course surveys.

[Return to Contents Page](#)

Financial Aid

Shortening Loan Periods

In response to recent inquiries concerning an institution's authority to shorten loan periods, IPD is providing the following summary of the Department of Education's position on retroactively changing overlapping loan periods:

Students who borrow Federal Stafford loans are subject to annual loan limits under the Higher Education Act of 1965 (HEA) and ED's code of federal regulations. Those loan limits apply to the academic year as certified by the institution. Institutions are not allowed to change loan periods for loans that have already been disbursed, whether they have been disbursed in part or in whole. If a borrower transfers from school A to school B before the expiration of school A's loan period, the maximum amount the borrower may borrow is the remaining balance of loan limits until the expiration of school B's new loan period.



[Return to Contents Page](#)

Welcome

ACE Welcomes New Dean

In August 2003, Dr. Robert Simpson joined Cornerstone University as its new Dean of Adult and Continuing Education and Graduate Programs. Dr. Simpson possesses an MBA from Indiana Wesleyan University and a PhD in Business and Strategic Planning from Union University. He has an extensive background in non-profit leadership with the Salvation Army. Prior to joining Cornerstone University, he served as the Director of Administration and Finance for the Acton Institute for the Study of Religion and Liberty in Grand Rapids, MI. He has taught in the undergraduate adult program and the MBA adult program at Indiana Wesleyan University, and more recently, he has taught in the MSM and the bachelor's degree programs with ACE at Cornerstone University. He is the founder of World Changers Project, a non-profit organization for the development of Christian leaders of businesses, Christian organizations, and ministry groups.



Dr. Robert Simpson

In addition to Dr. Simpson, the following employees have joined the ACE staff:

- Grand Rapids campus: Amy DeYoung, Marketing Support, and Amber Beery, Curriculum Services Coordinator.
- Troy campus: Flora Brooks, Regional Director, and Dawn Wellington, Student Services Coordinator.

Welcome to the new faces at Cornerstone!

[Return to Contents Page](#)

Enrollment Update

Ending November 2003

Albertus Magnus College		Centenary College		Ohio Dominican University	
ASBM	458	AALA	152	ASB	266
BSBM	512	AALX	54	BSBA	242
MSM	168	BSBA	290	BSBC	19
<u>MBA</u>	<u>139</u>	MBA	126	<u>MBA</u>	<u>258</u>
Total	1,277	<u>MSM</u>	<u>6</u>	Total	785
		Total	628		
Aquinas College		Cornerstone University		Olivet Nazarene University	
ABM	136	ASB	286	BSN	68
BSBA	129	ASC	101	BSM	43
<u>BSMIS</u>	<u>41</u>	BSBA	49	BBA	32
Total	306	BSM	194	AAB	119
		BSML	44	MBA	155
Averett University		<u>MSM</u>	<u>78</u>	<u>MSN</u>	<u>13</u>
ASB	337	Total	752	Total	430
BBA	631				
<u>MBA</u>	<u>524</u>	Gwynedd-Mercy College		Shorter College	
Total	1,492	ASB	205	BSBA	160
		BSBA	136	BSM	287
Baker University		BSN	14	AA/AB/AC	730
AAB	140	<u>BHS</u>	<u>11</u>	MBA	82
BAC	192	Total	366	<u>MAOM</u>	<u>30</u>
BBA	253			Total	1,289
BSM	157	Hope International Univ.		Southern Wesleyan University	
BBIS	14	AAB	108	Step I	364
MBA	596	BSM	62	Step II	249
DMBA	13	BSHD	194	BSM	176
<u>MSM</u>	<u>113</u>	AACM	72	BSBA	434
Total	1,478	MBA	11	MSM	177
		<u>MED</u>	<u>11</u>	MED	197
Belhaven College		Total	458	<u>MBA</u>	<u>64</u>
BRID/AA1	149			Total	1,661
MINI/AA3	32	Indiana Wesleyan University		St. Gregory's University	
BBA	265	ASB	1,724	ASBM	17
BSM	216	BSBIS	179	<u>BBA</u>	<u>13</u>
AA2	196	BSM	877	Total	30
MBA	139	BSBA	325	Thomas More College	
<u>MSM</u>	<u>61</u>	BSA	146	AES	40
Total	1058	MSM	375	BBA	132
		MBA	875	BBA-C	71
Benedictine University		<u>MBA online</u>	<u>129</u>	<u>MBA</u>	<u>140</u>
AABA	107	Total	4,630	Total	383
BAM	109				
MED	134	Medaille College		Wesley College	
<u>MBA</u>	<u>51</u>	ASB	134	ASB	189
Total	401	BBA	320	BBA	105
		MBA	125	<u>MBA</u>	<u>46</u>
Cardinal Stritch University		<u>MQL</u>	<u>17</u>	Total	340
ASB	735	Total	596		
Certificates	60	Montreat College		William Penn University	
BSM	531	ASB	294	AAL	333
BMIS	155	BBA	212	BAB	323
BSA	51	<u>MBA</u>	<u>48</u>	BAPA	20
BSBA	284	Total	554	<u>BSIM</u>	<u>30</u>
MBA	687			Total	706
MSM	191				
<u>MBA-H</u>	<u>2</u>				
Total	2,696				
				TOTAL:	22,316

Article Submissions

Thank you to everyone who contributed articles and information for this issue. We encourage anyone who wishes to submit articles to be included in the April 2004 issue to do so by March 15, 2004. Please e-mail your written articles in Microsoft Word to Carrie Powell at carrie.powell@apollogrp.edu.

Visit the CAAHE Web site at <http://www.caahe.org> for a calendar of CAAHE activities, an archive of past CAAHE publications, an online CAAHE Member Institution Directory, and CAAHE services such as the CAAHE Global Distribution Lists.

Editorial Staff

Sue Salter CAAHE Executive Director
Carrie Powell Assistant Editor

Thank you to the following individuals who contributed article information for the December 2003 issue of the CAAHE News: Jenifer Bavifard, Adrienna Frazer, Keith Hackett, Janell Harrison, Joyce Moulis, Maxine Nelson, Judy Powell, Chris Saulnier, Dr. Wally Saunders, Laryssa Solms, Cynthia Tweedell, and Kristen Vedder.

The *CAAHE News* is produced and distributed by the Institute for Professional Development (IPD), a higher education development and management corporation that assists private colleges and universities in developing unique adult-oriented degree programs. IPD is a member of the Consortium for the Advancement of Adult Higher Education (CAAHESM).

[Return to Contents Page](#)