

# CAAHE NEWS

CONSORTIUM FOR THE ADVANCEMENT OF ADULT HIGHER EDUCATION

Volume 14, Number 3

December 2004

## Upcoming Meetings and Conferences

- **CAAHE Institutional Reps Meeting**  
January 28–29, 2005  
Scottsdale Marriott Suites Old Town  
Scottsdale, AZ
- **IPD Financial Aid Conference**  
April 11–12, 2005  
Phoenix, AZ  
Register online by March 18, 2005:  
[http://www.ipd.org/events/2005\\_fa\\_conference/](http://www.ipd.org/events/2005_fa_conference/)
- **Student Services Conference**  
April 13–14, 2005  
Embassy Suites Hotel Jamaican Court  
Orlando, FL
- **CAAHE Conference**  
June 1–3, 2005  
Gaylord Opryland Resort  
Nashville, TN

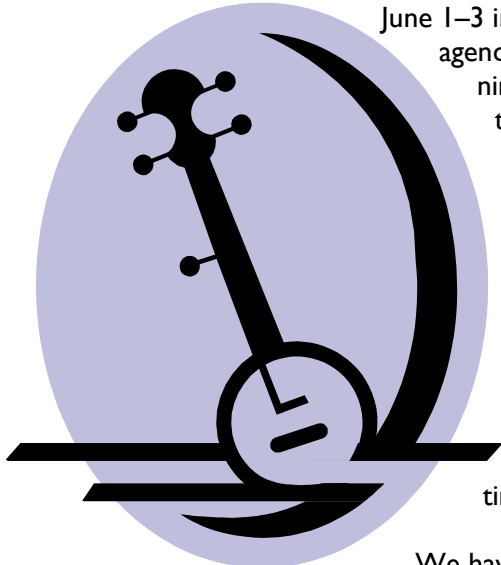
## Inside this Issue

<b>From the Chair</b>	<b>2</b>
<b>CAAHE News</b>	<b>3</b>
Montreat College SPAS Celebrates 10 Years	3
Belhaven College Honors State Department of ED	4
Cornerstone's Adult Program Renamed	5
Indiana Wesleyan Expands in Cincinnati	5
Cornerstone Opens New Adult Campus	5
<b>Student Successes</b>	<b>6</b>
Baker Holds Adult Student Appreciation Week	6
It Pays to Share: Belhaven Alumni Garner Award	6
Adult Education—Overcoming Fears and Changing Lives	7
<b>Academic Services</b>	<b>8</b>
Indiana Wesleyan Launches Computer Degree Program	8
Partners Again—Baker and Southern Methodist Universities	8
Baker Seeks to Offer Doctorate	9
Students Complete End-of-Course Surveys Online	9
<b>Financial Aid</b>	<b>10</b>
Approved Leave of Absence Defined	10
<b>IPD News</b>	<b>11</b>
2004 President's Circle Gathers in Washington	11
IPD Announces Organizational Changes	12
<b>Welcome</b>	<b>13</b>
Dr. Abiola Fapetu Named Interim Vice President and Dean	13
Carol Drury Back in CAAHE As Associate Dean	13
<b>Enrollment Update</b>	<b>14</b>
<b>Article Submissions</b>	<b>15</b>
<b>Editorial Staff</b>	<b>15</b>

## From the Chair

**By John Horn  
Aquinas College**

Dear Colleagues,



I would like to report to you that the 2005 CAAHE Conference scheduled for June 1–3 in Nashville, TN, is on track. We have come up with a tentative agenda that expands the conference through Friday evening. The planning committee did this for a couple of reasons: there never seems to be enough time to network or shop, and the *Grand Ole Opry* does not do weekday performances. What would a trip to Nashville be without a visit to the *Opry*? We are also planning a riverboat dinner trip from the hotel to downtown Nashville and its attractions on the night of arrival.

The CAAHE Executive Board has approved the theme of the conference, "Integrating Mission into Adult Programs," and we will soon be calling for papers and presenters that address this vital issue to CAAHE Member Institutions. Please consider sharing your expertise, experience, and time by submitting a proposal for presentation at the conference.

We have found conference sponsors for more than half of the lunches and breaks that require them and are talking to prospects to sponsor the remaining events.

By the way, it is my "duty" as Chair to keep a check on the Opryland Hotel to insure that it meets the standards for the CAAHE Conference. As part of this duty, my wife and I recently had dinner at the Cascades restaurant in the hotel, and it was world class. The restaurants in the Opryland Hotel—and there are several—are simply superb.

The Chair of CAAHE can do very little without the support of the IPD Academic and Institutional Services staff. Most of us are aware of Sue Salter's contributions as the Vice President of this department. What most of you do not know is that Sue has a new administrator, Marina Aguilar, who is truly the unsung hero of our annual conference. She does the budget, works with the hotel contracts, participates in the board meetings, and makes thousands of other details go away. Please join me in recognizing everything she has done and will do to make this conference a success. Thank you, Marina.

As the Christmas season approaches, I wish for all of you the most peaceful and spiritual holiday. Happy New Year, and may this year bring you to Nashville in June!

[Return to Contents Page](#)

Student services advisor Sonya Snowdon, left, looks on while receptionist Barbara Keepers, center, and student Carlos Whetstone smile pretty.



Student services advisor Erik Chuprevich, right, and current student Carlos Whetstone prepare their food.

## Montreat College SPAS Celebrates 10 Years

The end of August marked the 10th year of the School of Professional and Adult Studies (SPAS) program at Montreat College. What an exciting time for the College and for the program. The Charlotte Campus chose to celebrate October 1, 2004, in conjunction with Spirit Week and Homecoming activities at the Montreat campus. About 60 current and prospective students, alumni, and friends came out to enjoy music, lunch, and festivities in the parking lot of the campus. Many of Montreat's corporate neighbors provided gifts for prize drawings, and the week leading up to the event included free popcorn and nightly prizes as well. A special thanks goes out to Justin Vanderwalker, IPD Contract Manager, and IPD for helping to sponsor the event.

For some, like Dr. Abiola Fapetu, Vice President and Dean of Academics, and Deborah Wright, Director of the Charlotte Campus, it was hard to believe it had been 10 years. They have both been around since the beginning and have seen the graduates over the years. How many lives have been touched!

For the prospective students who attended, it proved a great opportunity to meet and talk with current students and graduates of the program. All were eager to become a part of such a wonderful institution.



Dr. Abiola Fapetu, left, chats with prospective student Ruth Brooks.



Janell Crowley, the newest enrollment rep, shows off her display.



Contract Manager Justin Vanderwalker, left, and radio celebrity Jim Shafer pause a moment.

[Return to Contents Page](#)

## Belhaven College Honors State Department of ED

The Belhaven College Aspire Accelerated Degree Program presented the Mississippi Department of Education with the Aspire Business Elite award for its commitment to employee education.



**Dr. Henry L. Johnson, State Superintendent for the Mississippi Department of Education, and Dr. Kay Owen, State Dean of the Belhaven College Aspire program in Mississippi hold the award.**

"We appreciate Belhaven College hosting this reception to recognize these Mississippi Department of Education employees who have worked so diligently to complete their degrees while maintaining full-time jobs," State Superintendent for Education Dr. Henry L. Johnson said at the July ceremony. "We certainly support the pursuit of education at all levels, and these graduates are to be commended for their hard work and dedication."

Eighteen State Department employees have graduated from the Aspire program since 1994.

The Aspire program offers bachelor's and master's degrees in business administration, a bachelor's in social services, and a 2-year associate's degree. Belhaven also has campuses in Memphis, TN, and Orlando, FL.

*'We certainly support the pursuit of education at all levels, and these graduates are to be commended for their hard work and dedication.'*

*—Dr. Henry L. Johnson,  
State Superintendent  
for Education*



**Dr. Henry L. Johnson stands with current students, graduates, and staff members from the Mississippi Department of Education. Front row (left to right): Yvette Gilbert (class of 2002); Entry Hairston (05); Dr. Johnson; Nicosia G. Ware, Director of Innovative Support; Deliria Bennett (05); and Katrina McDowell (04). Second row: Wesley Williams, Director of the Mississippi Teacher center; Joyce Wallace (02); Lionel Knight (2000); Eloise Millsap (03); and Jerry McClendon (98).**

[Return to Contents Page](#)



## Cornerstone's Adult Program Renamed



The Adult and Continuing Education Division of Cornerstone University underwent a name change this fall and is now the Division of Professional and Graduate Studies. This name change is designed to clarify and position the program for the future and demonstrates a foundational shift away from offering only degree-completion programs. The name change also positions the division for expansion into the niche market of professional development programs.

Cornerstone University must continue to position itself for the changing trends that are occurring within the nontraditional education market. These changing trends include a shift to focused or specialized degree offerings, the corporate demand for employees to participate in lifelong professional development programs, and a move into the rapidly expanding online education market.

---

## Indiana Wesleyan Expands in Cincinnati

What's up in Cincinnati? Indiana Wesleyan University is once again expanding into new territories with a brand new, 30,000-square-foot education center now open in West Chester, OH. Since starting classes in August 2004, Indiana Wesleyan currently operates two Master's in Education programs, a Bachelor of Science degree for registered nurses, and three business degrees at the associate's, bachelor's, and graduate levels.

With visibility along the busy I-75 corridor 20 miles north of downtown Cincinnati, the center offers convenient conferencing opportunities for major companies and recently hosted a 2-day training seminar for Dell Computers, the world's largest direct-sale computer vendor.

Indiana Wesleyan University's adult enrollment has increased to more than 7,500 students, and planning is underway to begin offering classes in Dayton, OH, in the spring of 2005.



---

## Cornerstone Opens New Adult Campus

The Division of Professional and Graduate Studies at Cornerstone University recently opened its newest location in Zeeland, MI. This lakeshore campus will meet the educational needs of adults in the area who have expressed interest in Cornerstone's associate's, bachelor's, or master's programs.

The accessible location and accelerated courses make the Zeeland campus a significant resource for the community. Classes are projected to start in Zeeland in late January 2005.

[Return to Contents Page](#)

# Student Successes

## Baker Holds Adult Student Appreciation Week

**'We want the students to know how much we appreciate them.'**

—Kelly Belk,  
Director of Marketing

Staff members from Baker University's School of Professional and Graduate Studies (SPGS) hosted student appreciation weeks at both the Overland Park and Lee's Summit campuses during the month of September. Students were invited to spend their breaks socializing with Baker staff members and their classmates while enjoying a snack of popcorn and soda.

Kelly Belk, Director of Marketing, remarked that the purpose of the week "was an opportunity for us to say thank you for choosing Baker University." Kelly continued, "We want the students to know how much we appreciate them."

Before class and during breaks, students had an opportunity to visit with Baker SPGS staff about their programs, classes, and study groups. Students also had an opportunity to complete a survey about communication and refer future students to Baker University.

## It Pays to Share: Belhaven Alumni Garner Award

Belhaven College established its President's Circle to honor the top alums who refer students to the College's Aspire program.

The 2004 recipients were Lewanika Davis (class of 2004), Symyria Peters (class of 2002), and Kenneth Williams (class of 2002, Memphis).

These winners' names will be displayed on a permanent plaque that will hang in Raymond Hall. The presentation was made at the Aspire Homecoming reception by Belhaven College President Dr. Roger Parrott and Dean of the business school, Dr. Chip Mason.



**Belhaven President Dr. Roger Parrott, left, holds the award, with recipient Lewanika Davis, center, and Dr. Chip Mason, Dean of the business school.**

Lewanika is an employee of Trustmark National Bank and initiated e-mail blasts to all Trustmark employees in Jackson, MS; Memphis, TN; and McComb, MS. She also contributed an article on the Aspire program to the company newsletter.

[Return to Contents Page](#)

## Adult Education—Overcoming Fears and Changing Lives

Montreat College enrollment representative Kathy Haney shared the following stories of two students' motivation to continue in their education and attain their dreams.

A young lady, inquiring into the associate's program, was obviously nervous about going back to school—evidenced by shifting from hip-to-hip in her seat, tapping her foot, crossing and uncrossing her legs, fidgeting with her hands as well as verbalizing that she was "scared to death." But she also expressed that she "had to do this."

The student enrolled, and a few years passed; then she came to turn in an application for the bachelor's program. Nervous about continuing, but less so than before, she still was determined to "do this" and to be the first one in her family to go to college.

When she turned in her application for the master's degree, she asked whether Kathy remembered how nervous she was when she began school. Of course, Kathy did and was glad to be there to see this student accomplish her dream.

This student's confidence grew with each progressive stage, and she will graduate having persevered through single parenthood, an abusive relationship (which she is no longer in), and taking custody of two small children when her best friend died.

Another student, Diane, went to see Kathy without telling her family that she was seriously thinking of going back to school. When she brought it up to her family prior to this, she was asked, "Why would you want to go back to school at this time in your life after all you have been through?"

Her major concerns were overcoming her family's objections, justifying the expense, and financing the classes. She is in her early 50s and has survived two bouts of cancer. She holds down a full-time job and is a valuable asset to her company. With a positive attitude and easy laughter, she overcame her anxiety, family objections, and financial concerns.

She was determined to get her degree because it was something she always wanted to complete. Despite some stresses at the beginning, Diane enrolled in the bachelor's core curriculum and says, "Going back to school is the best thing I have ever done. It is such a positive thing. I had doubts about my age, but this is truly the best, most positive thing!"

Knowledge of, and empathy with, prospective students' fears and anxieties enable Kathy to encourage her students that they are already equipped with the resources it takes to be a successful student—they just have to take the next step and she will be right there with each one of them.

**'Going back to school is the best thing I have ever done. It is such a positive thing. I had doubts about my age, but this is truly the best, most positive thing!'**

—Diane,  
Student,  
Montreat College

[Return to Contents Page](#)

# Academic Services

## Indiana Wesleyan Launches Computer Degree Program



Indiana Wesleyan University recently launched a new computer-oriented degree program for those who wish to be entry-level information technology professionals.

The Associate of Science in Computer Information Technology (ASCIT) focuses student attention on the maintenance of computer systems while also aiding in the acquisition of much needed critical thinking skills through instruction in a liberal arts core.

It is hoped that the combination of a liberal arts core and technical coursework will enable graduates to become leaders and managers in the business environment.

---

## Partners Again—Baker and Southern Methodist Universities

Baker University, in cooperation with Southern Methodist University (SMU), will begin offering a series of courses in dispute resolution.

This program, developed by SMU initially as a graduate certificate program, will be available to all current students enrolled in graduate programs at Baker University as well as Baker alumni. The first course, *Introduction to Dispute Resolution*, will be offered in February 2005 in a two-weekend format.

The focus of this coursework is developing individuals who can effectively manage conflict within their organizations. Corporate, educational, legal, religious, and family communities are increasingly using professional dispute resolution to settle differences. Subsequent classes in mediation and negotiation will follow in the spring.

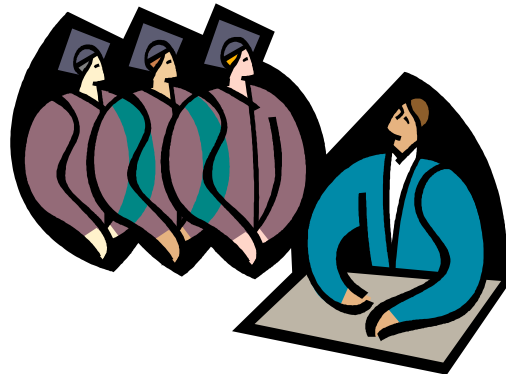
[Return to Contents Page](#)



## Baker Seeks to Offer Doctorate

Baker University recently received approval from the State of Kansas and the National Council for Accreditation of Teacher Education (NCATE) to offer a Doctorate in Education in Organizational Leadership.

An evaluator team from the North Central Association (NCA) is scheduled to complete a program proposal review in the spring of 2005. Upon approval, Baker anticipates starting the first cohort in the fall of 2005.



---

## Students Complete End-of-Course Surveys Online

Indiana Wesleyan University is now using WebSurveyor to conduct its End-of-Course Surveys online.

As the University grows, it is becoming increasingly difficult to keep up with surveys for every facilitator in every class. A few years ago, the College of Adult and Professional Studies limited paper and pencil surveys to new facilitators and a few others.

Students now have an opportunity to go online to complete a survey when they do not get one in class. Results are sent in electronic form to program directors who review them and pass them along to facilitators.

The Online End-of-Course Survey is available at [http://caps.indwes.edu/current\\_students.htm](http://caps.indwes.edu/current_students.htm).



[Return to Contents Page](#)

# Financial Aid

## Approved Leave of Absence Defined

A leave of absence (LOA) is a temporary break in a student's attendance; therefore, it must meet certain conditions in order to be counted as an interruption in a student's education. If the conditions are not met, the student is considered to have withdrawn from school, and a return calculation must be performed. In order for a LOA to qualify as an approved LOA, the following are required:

- The institution must have a reasonable expectation that the student will return from the LOA.
- Upon return, the student must be permitted to complete the coursework he/she began prior to the LOA (except for clock hour or non-term credit hour programs).
- The institution may not assess the student any additional charges; the student's need may not increase; and the student is not eligible for any additional federal student aid.
- The institution must have a formal LOA policy, requiring all requests be submitted in writing and include a reason for the request.
- The student must follow the policy in requesting an LOA.
- The institution must approve the request according to its policy.
- The number of days in the approved LOA, when combined with the number of days in all other approved LOAs, may not exceed 180 days in a 12-month period.
- If the student received Title IV Higher Education Act loans, the institution must explain to the student, prior to granting the LOA, the effects that the student's failure to return from the LOA may have on the student's loan repayment terms.



On November 1, 2002, the Department of Education made the following changes to the requirements:

- Multiple LOAs will be allowed at the discretion of the institution.
- An institution's LOA policy must require the student to submit a written request specifying the reason for the LOA.
- For clock hour or credit hour non-term programs, it is no longer required that the student, upon his/her return for a LOA, be required to complete the exact same coursework he/she had begun prior to the leave.

When a student is on an approved LOA, there must be a reasonable expectation that the student will return from the LOA. At an institution not required to take attendance, if a student does not return to the school at the expiration of an approved LOA (or a student takes an unapproved leave of absence), the student's withdrawal date is the date the student began the LOA (2004–2005 *Federal Student Aid Handbook*, pp. 5–22). An institution's policy must require a student to apply in advance for an LOA unless unforeseen circumstances prevent the student from doing so. For example, if a student were injured in a car accident and needed a few weeks to recover before returning to school, the student would not have been able to request the LOA in advance. A school may grant an LOA to a student who did not provide the request prior to the LOA due to unforeseen circumstances if the school

documents the reason for its decision and collects the request from the student at a later date (2004–2005 *FSA Handbook*, pp. 5–21).

[Return to Contents Page](#)

# IPD News

## 2004 President's Circle Gathers in Washington



IPD is pleased to share the membership list of the 2004 President's Circle. Twenty-five of these individuals celebrated their accomplishments and shared best practices in Washington, D.C., from November 9–12, 2004. The goal of the President's Circle is to identify top performers throughout the company, who then use their knowledge and abilities to develop core competencies that can be transferred throughout the organization.

Alayne Barrett  
Alicia Bartlett  
Amber Zenger  
Amy Kwiatkowski  
Bernie Bench  
Brent Stirewalt  
Carrie Powell  
Christopher Saulnier  
Deanna Boe  
Derek Patterson  
Ed Ramsay  
Julie Birchall  
Kathy Haney  
Kathy Mize  
Linda Kluge  
Linda Szczerbinski  
Marianne Fingado  
Marion Gayle  
Peter Albrecht  
Peter Veren  
Rebecca Taylor  
Rhonda Rigney  
Sarah Benson  
Sheeraz Merchant  
Shirley Hansen  
Tajhia Corl  
Tracey Graham  
Vicki Culbreth

Enrollment Manager  
Campus Accounting Manager  
Marketing Support Coordinator  
Contract Manager  
University Representative  
Regional Accounting Manager  
Academic Affairs Manager  
Corporate Financial Analyst  
Director of Student Services  
Enrollment Counselor  
Business Development Specialist  
Enrollment Counselor  
Enrollment Counselor  
Enrollment Counselor  
Associate Enrollment Counselor  
University Representative  
Business Development Specialist  
Enrollment Counselor  
Contract Manager  
Enrollment Counselor  
Marketing Support Coordinator  
Campus Accounting Supervisor  
University Representative  
Campus Accounting Manager  
Enrollment Manager  
Campus Accounting Manager  
Enrollment Counselor  
Contract Manager

Indiana Wesleyan University  
Aquinas College  
Baker University  
Ohio Dominican University  
Indiana Wesleyan University  
Southern Region  
Corporate  
Corporate  
Corporate  
Indiana Wesleyan University  
Olivet Nazarene University  
Indiana Wesleyan University  
Montreat College  
Indiana Wesleyan University  
Cardinal Stritch University  
Cardinal Stritch University  
Cornerstone University  
Indiana Wesleyan University  
Centenary College  
William Penn University  
Montreat College  
Averett University  
Indiana Wesleyan University  
Benedictine University  
Cardinal Stritch University  
Montreat College  
Shorter College  
Thomas More College

[Return to Contents Page](#)

## IPD Announces Organizational Changes

IPD has made several organizational changes for fiscal year 2005 to ensure that IPD is utilizing the strengths of the executive management team and becoming more responsive to CAAHE Member Institutions.

The regions within IPD have been realigned, with the Regional Vice Presidents as follows:

- **Jane Baker Pierce** — Southern Region: Averett University, Belhaven College, Montreal College, Shorter College, Southern Wesleyan University, and Thomas More College
- **David Rose** — Midwest Region: Aquinas College, Baker University, Benedictine University, Indiana Wesleyan University, Ohio Dominican University, Olivet Nazarene University, and William Penn University
- **Norm Allgood** — Northern Region: Albertus Magnus College, Cardinal Stritch University, Centenary College, Cornerstone University, Gwynedd-Mercy College, Medaille College, and Wesley College

**Kristen Vedder** has been promoted to the role of Assistant Regional Vice President of the newly developed Western Region. Kristen will provide leadership to IPD's operations at Hope International University, St. Gregory's University, and Warner Pacific College. She will continue with her Financial Aid responsibilities as a plan is formulated to replace this position. Kristen previously served as IPD's Director of Student Financial Services and Regional Director of Accounting.

**Angella Oliver** has taken on a newly developed and important role as Corporate Vice President of Planning and Development. As a member of the Executive Management Team, Angella will focus on working with IPD's management teams in the development of collaborative joint strategic plans with CAAHE Member Institutions, which will help identify the short- and long-range goals of each institution.

**Jerry Dervin** has been promoted to Assistant Vice President of Finance, continuing in his current role overseeing financial reporting and taking on additional responsibilities including direct oversight of all Regional Accounting Managers and division accounting. Jerry previously served as IPD's Regional Director of Accounting and Director of Corporate Reporting.

**Dr. John Lopez** has been promoted to Assistant Vice President of Special Projects, overseeing the areas of regulatory/accreditation, project management, communications, and institutional relations. John joined IPD in October 2002 as Director of Institutional Research and Effectiveness and has been involved with many levels of the company including participation in several team projects.

**Butch Jones**, Corporate Vice President of Contract Development, has agreed to take on the oversight of all IPD compliance areas and to reinstitute the "formal" contract review process as outlined in the contracts, in addition to continuing his leadership role in contractual areas.

**Sue Salter**, Corporate Vice President of Academic and Institutional Services (AIS), will assume oversight of the Corporate Call Center, where she and Kieth Schumacher, Call Center Manager, will focus heavily on retention efforts and activities. IPD looks forward to providing this additional service to CAAHE Member Institutions in the AIS area.

# Welcome

## Dr. Abiola Fapetu Named Interim Vice President and Dean

Montreat College congratulates Dr. Abiola Fapetu upon her acceptance of the position of Interim Vice President and Dean of Academics. She began her new duties August 9, 2004.

Abiola earned her undergraduate degree in business and finance at North London University and her MBA and DBA in finance at United States International University. She has continued to pursue professional growth opportunities, including presenting at conferences and publishing in peer-reviewed journals. Her second book, *Business and Career Planning Workbook*, was published last year by Kendall/Hunt.

Abiola has served Montreat College since 1995 as a member of the business faculty as well as in administrative roles including Business Division Chair, Associate Dean for Adult Education, and, most recently, Director of the MBA Program. She has demonstrated strong teaching and leadership skills; her faculty colleagues named her the David L. Parks Distinguished Professor in 1999, and she has been honored with external awards for leadership and for contributions to international business and adult education. Abiola understands both the traditional and adult components of Montreat's academic program, and the College looks forward to her valuable contribution as a member of the Cabinet, especially in the strategic planning process.

---

## Carol Drury Back in CAAHE As Associate Dean

The College of Business (COB) at Cardinal Stritch University has named a new Associate Dean for the Wisconsin Region. Carol Drury, who started October 28, 2004, will oversee facilities, operations, and business outreach for the College in most of Wisconsin.

She may be a familiar face to those in CAAHE because she served as Director of Curriculum for Fontbonne University's accelerated adult program. Later, she served as the Executive Director of the Fontbonne program.

Carol received her bachelor's degree from Chatham College in Pittsburgh, in psychology and communications, and a master's in management degree from Webster University in St. Louis.

Carol's resume also includes fundraising and public relations for nonprofit organizations, including public radio and social services. She is confident that her professional experience will lend itself to achieving what she sees as the most important goal of her new position: increasing enrollment and retention in COB programs.

[Return to Contents Page](#)



# Enrollment Update

As of November 2004

<b>Albertus Magnus College</b>		<b>Cornerstone University</b>		<b>Olivet Nazarene University</b>	
ASBM	562	ASB/ASC	272	BSN	73
BSBM	578	ASE/AEC	126	BSM	20
MSM	190	BSM	261	BBA	41
<u>MBA</u>	<u>195</u>	BSBA	43	AAB	172
<b>Total</b>	<b>1,525</b>	BSML	43	MBA	112
		MSM	73	<u>MSN</u>	<u>6</u>
		<u>MAED</u>	<u>36</u>	<b>Total</b>	<b>424</b>
		<b>Total</b>	<b>854</b>		
<b>Aquinas College</b>		<b>Gwynedd-Mercy College</b>		<b>Shorter College</b>	
ABM	119	ASB	175	BSBA	199
BSBA	110	BSBA	208	BSM	348
<u>BSMIS</u>	<u>42</u>	BSN	22	AA/AB/AC	744
<b>Total</b>	<b>271</b>	<u>ASN</u>	<u>7</u>	BSHS	44
		<b>Total</b>	<b>412</b>	MBA	106
				<u>MA</u>	<u>60</u>
				<b>Total</b>	<b>1,501</b>
<b>Averett University</b>		<b>Hope International University</b>		<b>Southern Wesleyan University</b>	
ASB	330	AAB	112	Step I	351
BBA	568	BSM	73	Step II	224
<u>MBA</u>	<u>446</u>	BSHD	172	BSM	207
<b>Total</b>	<b>1,344</b>	AACM	30	BSBA	411
		MBA	13	ASE	38
		<u>MED</u>	<u>15</u>	MSM	159
		<b>Total</b>	<b>415</b>	MED	254
				<u>MBA</u>	<u>125</u>
				<b>Total</b>	<b>1,769</b>
<b>Baker University</b>		<b>Indiana Wesleyan University</b>		<b>St. Gregory's University</b>	
BAC	337	ASB	1,874	ASBM	88
BBA	232	BSBIS	175	BBA	59
BSM	189	BSM	1204	<u>BMIS</u>	<u>15</u>
BBIS	23	BSBA	289	<b>Total</b>	<b>162</b>
MBA	539	BSA	159		
FSMBA	34	BSMK	29	<b>Thomas More College</b>	
<u>MSM</u>	<u>119</u>	RNBS	34	AES	81
<b>Total</b>	<b>1,473</b>	ASCIS	29	BBA	138
		Certificate	33	C-BBA	65
		MSM	443	C-AES	14
		MBA	1049	<u>MBA</u>	<u>137</u>
		<u>MED</u>	<u>51</u>	<b>Total</b>	<b>435</b>
		<b>Total</b>	<b>5,369</b>		
<b>Belhaven College</b>		<b>Medaille College</b>		<b>Warner Pacific College</b>	
BRID/AA1	147	ASB	115	AAOD	16
MINI/AA3	34	BBA	322	BSHD	23
BBA	296	MBA	140	<u>BSBA</u>	<u>11</u>
BSM	264	<u>MOL</u>	<u>75</u>	<b>Total</b>	<b>50</b>
AA2	211	<b>Total</b>	<b>652</b>		
MBA	126			<b>Wesley College</b>	
MSM	88			ASB	129
<u>MAT</u>	<u>5</u>			BBA	112
<b>Total</b>	<b>1,171</b>			<u>MBA</u>	<u>28</u>
				<b>Total</b>	<b>269</b>
<b>Benedictine University</b>		<b>Montreat College</b>		<b>William Penn University</b>	
AABA	160	ASB	255	AAL	392
BAM	138	BBA	234	BAB	380
MED	236	ASED	5	BAPA	20
<u>MBA</u>	<u>62</u>	<u>MBA</u>	<u>46</u>	<u>BSIM</u>	<u>46</u>
<b>Total</b>	<b>596</b>	<b>Total</b>	<b>540</b>	<b>Total</b>	<b>838</b>
<b>Cardinal Stritch University</b>		<b>Ohio Dominican University</b>			
ASB	753	ASB	246		
Certificates	79	BSBA	233		
BSM	555	BSM	40		
BMIS	70	<u>MBA</u>	<u>253</u>		
BSA	42	<b>Total</b>	<b>772</b>		
BSBA	273				
MBA	591				
<u>MSM</u>	<u>218</u>				
<b>Total</b>	<b>2,581</b>				
<b>Centenary College</b>					
AALA	169				
AALX	52				
BSBA	276				
MBA	203				
<u>MSM</u>	<u>10</u>				
<b>Total</b>	<b>710</b>				

**TOTAL: 24,133**

## Article Submissions

Thank you to everyone who contributed articles and information for this issue. We encourage anyone who wishes to submit articles to be included in the April 2005 issue to do so by March 15, 2005. Please e-mail your written articles in Microsoft Word to Carrie Powell at [carrie.powell@apollogrp.edu](mailto:carrie.powell@apollogrp.edu).

Visit the CAAHE Web site at <http://www.caahe.org> for a calendar of CAAHE activities, an archive of past CAAHE publications, an online CAAHE Member Institution Directory, and other CAAHE services.

---

## Editorial Staff

**Sue Salter ..... CAAHE Executive Director**

**Carrie Powell ..... Assistant Editor**

Thank you to the following individuals who contributed article information for the December 2004 issue of the CAAHE News: Marina Aguilar, Amber Beery, Tanya Brieger, Carol Drury, Brad Grubb, Kathy Haney, Janell Harrison, John Horn, Joyce Moulis, Susan Newton, Bradford Sample, Chris Saulnier, Cynthia Tweedell, Kristen Vedder, Gina Wren, and Deborah Wright.

The CAAHE News is produced and distributed by the Institute for Professional Development (IPD), a higher education development and management corporation that assists private colleges and universities in developing unique adult-oriented degree programs. IPD is a member of the Consortium for the Advancement of Adult Higher Education (CAAHE<sup>SM</sup>).



[http://www.caahe.org/  
publications/index.asp](http://www.caahe.org/publications/index.asp)